



## MAKtrigger DRS Owner's Manual



AR-10  
&  
AR-15

**Warning:** To ensure safe use of a firearm trigger assembly, properly install the trigger snug-down screws and follow all instructions carefully. Seek assistance from MAK or a licensed gunsmith if needed, and always exercise caution and adhere to proper safety



## Disclaimer



Please be aware that incorrect handling, installation, storage, or use of MAK products and/or the firearm which they are installed in can result in death, serious injury, and/or property damage. Our products are designed specifically for use in the advertised firearm, and it is the user's responsibility to ensure compatibility. Aftermarket trigger handling and installation can be complex and require knowledge of firearms handling. If the user is not familiar with these procedures, please seek assistance from MAK or a qualified professional.

1

## Limited Lifetime Transferable Warranty

For MAK products purchased in USA and Canada

This warranty describes the warranty covered by MAK. Other additional rights may vary from State to State.

MAK products are warranted against defects in workmanship and materials for the life of the product. Exceptions of the Limited Lifetime Transferable Warranty Conditions are listed in the Clause "Conditions not covered under the MAK Limited Lifetime Transferable Warranty". The MAK product refers to any mechanical and optical components associated with the functioning of the system, but not to accessory parts that are subject to natural wear and tear, such as batteries, pouches, rubber parts, protective caps, eyecups, shoulder straps, cleaning cloths, etc.

If a defect covered by this warranty is found, MAK will, at its sole discretion, repair or replace it with a product in perfect working condition and of equal or greater value.

4

MAK specifically disclaims responsibility for any damage or injury whatsoever occurring in connection with, or as a result of the installation, use, or misuse of a MAK product in any types of firearms that are in good or worn condition, that are nonstandard, or have been modified.

By installing or using any purchased MAK product ("MAKtrigger DRS"), the user agrees to the following terms and conditions:

1. The user will comply with all applicable firearm safety laws, protocols, and regulations in the jurisdiction where they handle, install, store, and/or use the MAK Product.
2. The user confirms that they are legally entitled to purchase and use the MAK Product and the firearm it will be installed in, in the jurisdiction where they purchase and use the product.
3. The user assumes responsibility for ensuring that anyone using the MAK Product complies with these terms and conditions and with all applicable firearms safety protocols and regulations.
4. The user agrees to test the MAK Product for proper trigger fit and function before each use, with the firearm in an unloaded condition. Never assume the MAK Product works without testing it.
5. The user agrees to consistently use a trigger lock on the installed MAK Product, along with any related safety mechanism on the firearm.

2

Product registration is not required. As basis for determining the beginning of the warranty period a proof-of-purchase is required in order to redeem the Limited Lifetime Transferable Warranty cover.

### Limited Lifetime Transferable Warranty Conditions:

MAK products are warranted against defects in workmanship and materials for a period of ten (10) years from the date of original purchase.

### Conditions not covered under the Limited Lifetime Transferable Warranty:

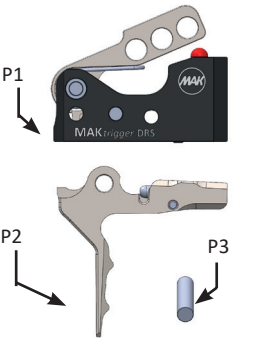
Loss or theft, deliberate or accidental damage and cosmetic damage are not covered by the warranty.

Also excluded from the coverage are normal wear and tear, damage determined to have been caused by unauthorized repair or modification, misuse, abuse, neglect, failure to follow the product instructions or improper care, as well as damage caused by natural disasters, acts of terrorism and combat conditions.

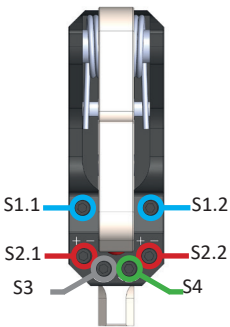
5

3

MAKtrigger Parts List and Description

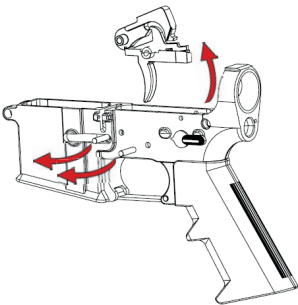


| Marking | Part Name     |
|---------|---------------|
| P1      | Main Body     |
| P2      | Trigger Lever |
| P3      | Pivot Pin     |



| Marking     | Task           |
|-------------|----------------|
| S1.1 & S1.2 | Mounting       |
| S2.1 & S2.2 | Trigger Weight |
| S3          | Trigger Stop   |
| S4          | Pressure Point |

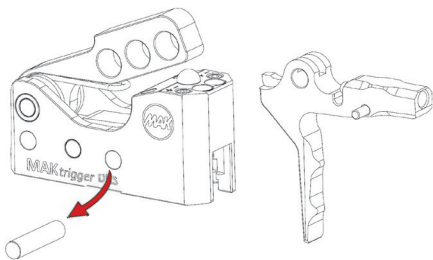
Installation Step 1: Remove the Existing Trigger



**Warning:** Handle firearms safely by pointing them in a secure direction, removing the magazine and checking the chamber for ammunition.

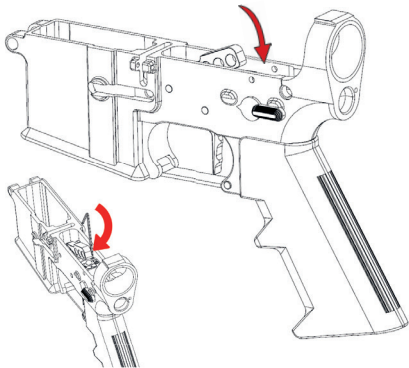
- 1.1) Remove all the necessary parts to access the lower receiver.
- 1.2) Remove the pins connecting the existing trigger to the lower receiver. Be wary that you might need to remove additional security features depending on your existing trigger.
- 1.3) Remove the existing trigger assembly.

Installation Step 2: Remove MAKtrigger Pivot Pin



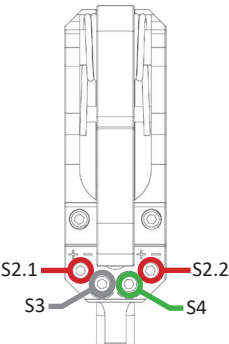
- 2.1) Get the MAKtrigger in the cocked position.
- 2.2) Remove the marked pivot pin from the MAKtrigger.
- 2.3) Separate the main body and the trigger lever.
- 2.4) Install the trigger handle into the lower receiver. Note: The safety mechanism of the rifle does not need to be removed.

Installation Step 3: Install MAKtrigger Body



- 3.1) Insert the MAKtrigger body into the lower receiver.
- 3.2) Align the front pin holes and insert the original rear pin.
- 3.3) Align the rear pin holes and insert the original front pin.
- 3.4) Use the included hex wrench to tighten the mounting screws equally.

Installation Step 4: Adjustment



All MAKtrigger products are adjusted to perform optimally from the factory but the user can fine-tune the settings to suit them better.

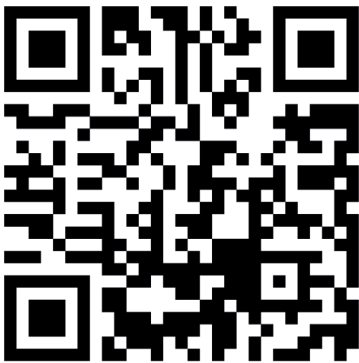
**S2.1** and **S2.2** adjustments are used to alter the trigger weight. Clockwise turning will increase the weight and counterclockwise will decrease it. Both adjustments must be adjusted equally for accuracy.

The **S3** adjustment shortens the trigger path and reset way. Turning it clockwise lowers the trigger stop but if adjusted too far, it can block the trigger mechanism. In such a case, turning it counterclockwise will raise the trigger stop and make the trigger functional again.

The **S4** adjustment is for the pressure point. The user can adjust the pressure point adjustment to engage right before the trigger drop to achieve a more precise shooting experience.

**We suggest the user to check the MAKtrigger adjustment video.**

You can find all the information and the assembly and adjustment videos on our website.



CONTACT OUR CUSTOMER SERVICE DEPARTMENT VIA INTERNET:

 [kilic@mak.ag](mailto:kilic@mak.ag)  
<https://www.mak.ag/contact/>